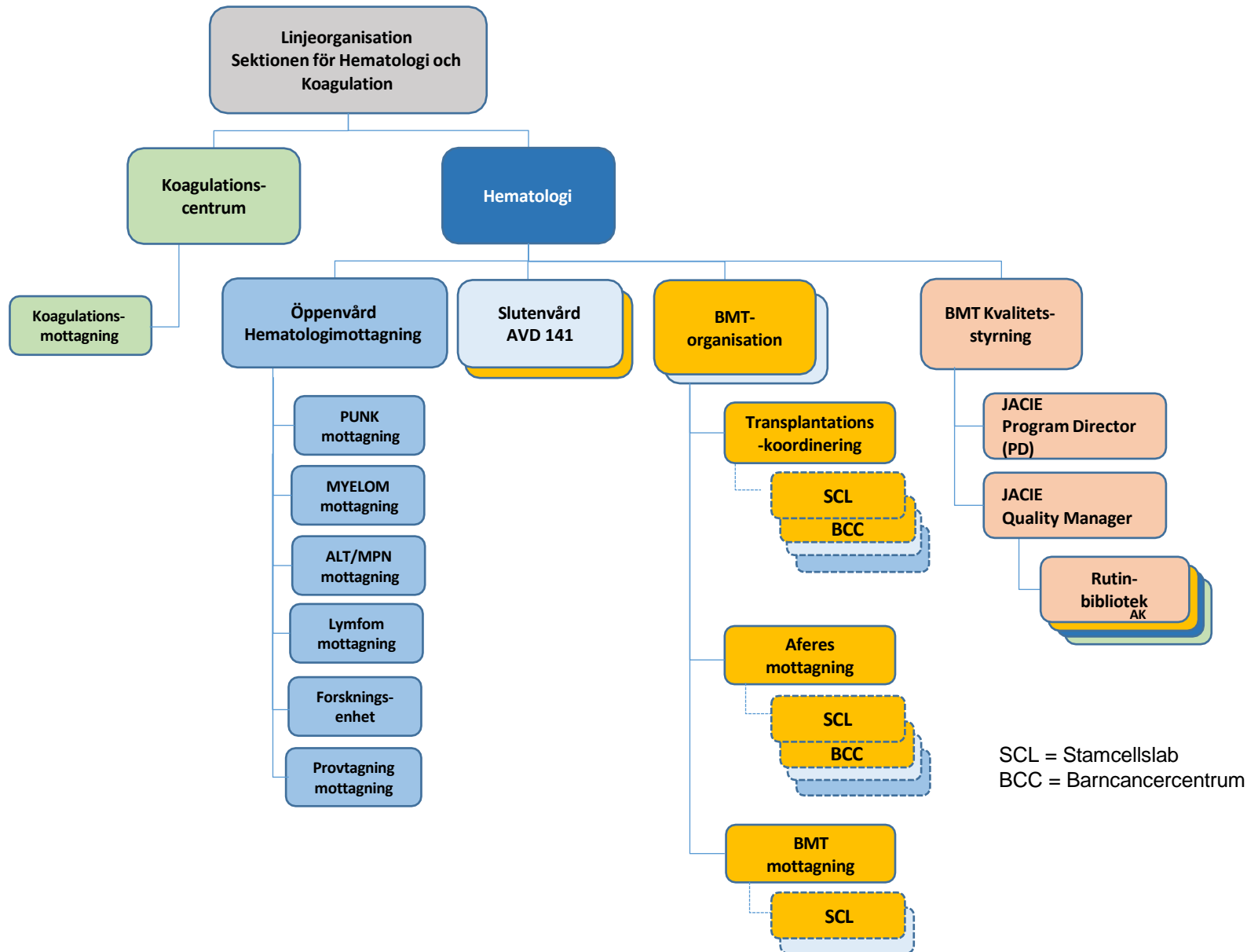
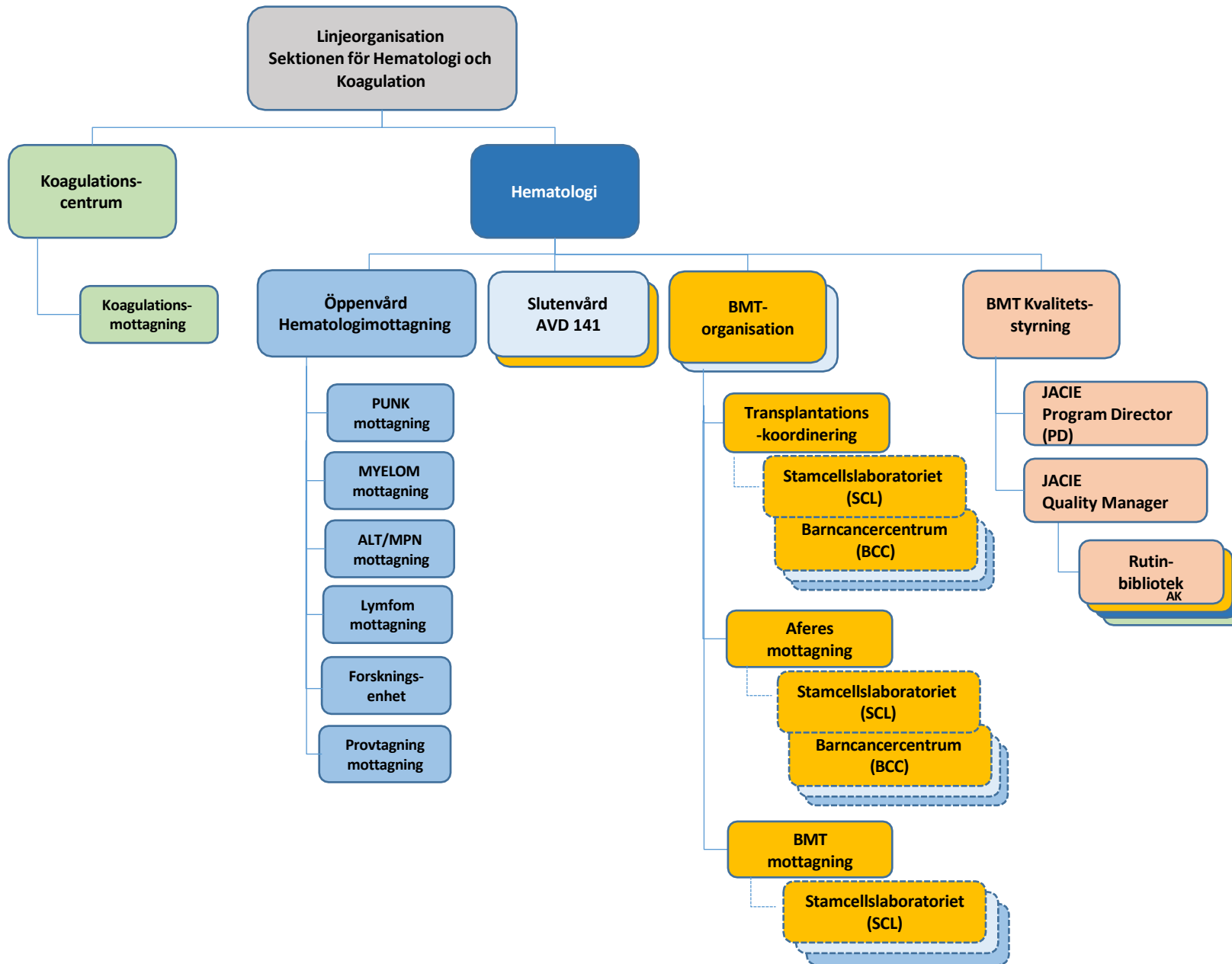
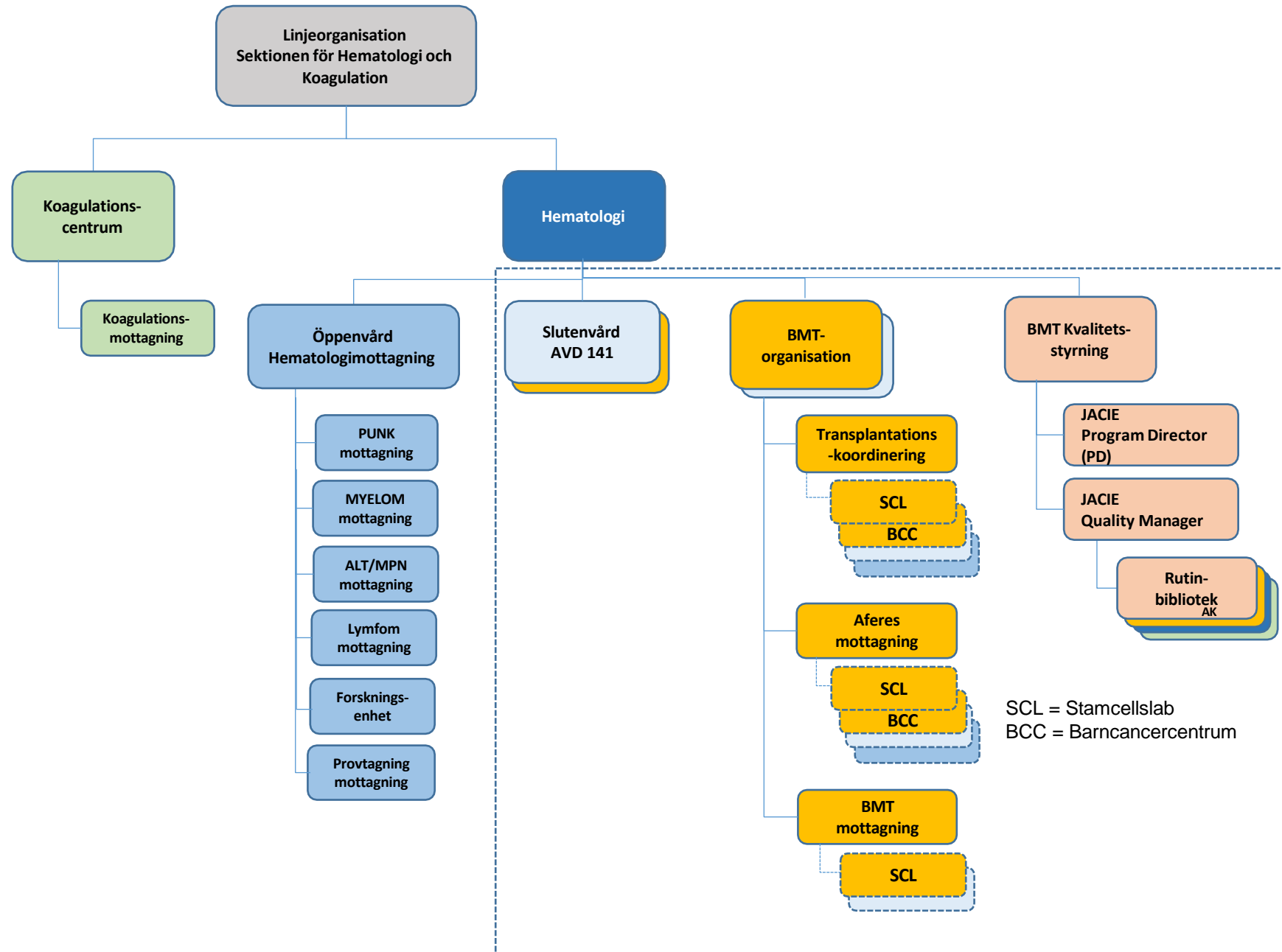


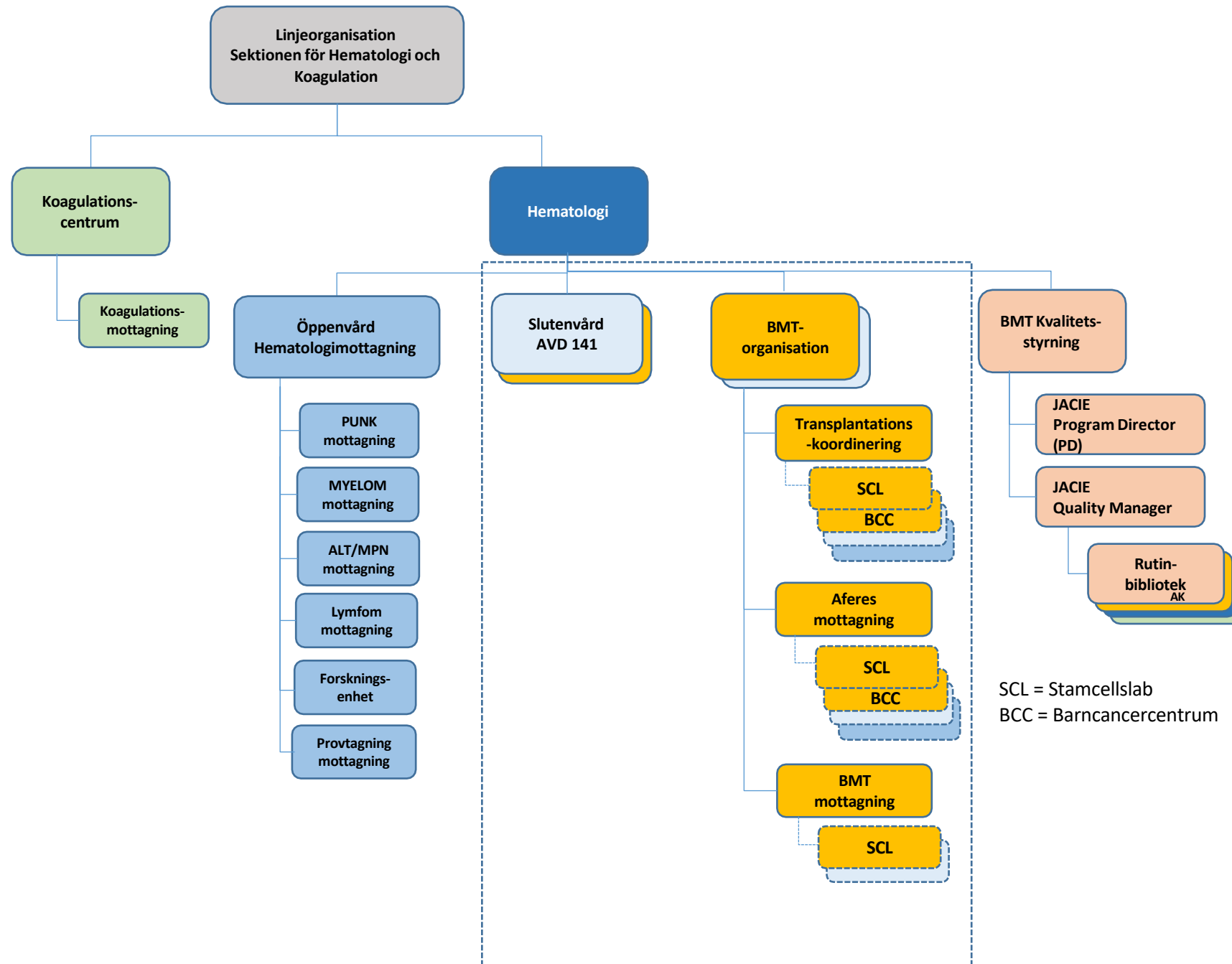
# S1 Bilaga 3 Organisationsschema rev 9



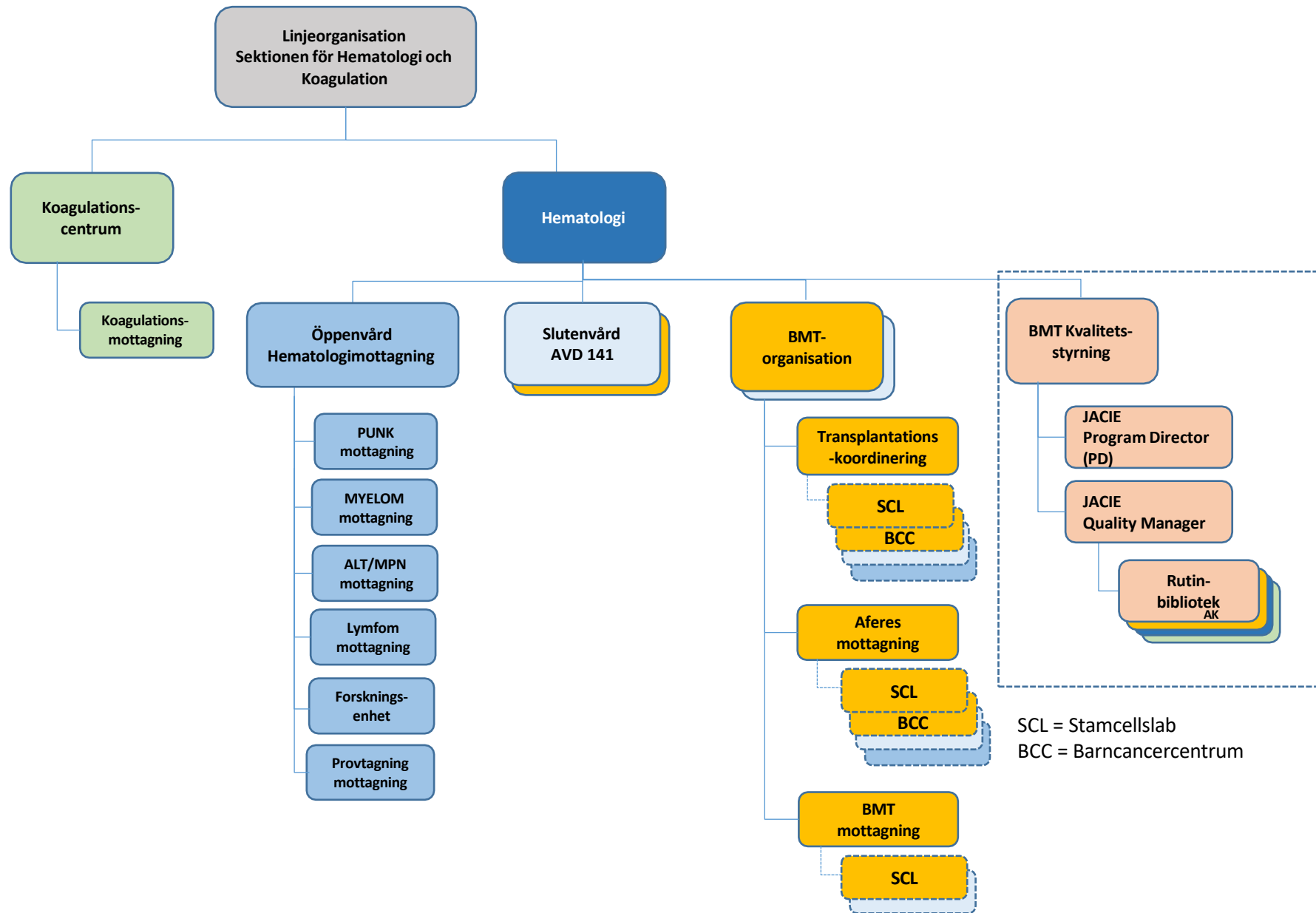
1. 2018-11-29
2. 2018-12-10
3. 2022-01-21 Ändrad numrering av Bilagan
4. 2022-02-04 namn ändrats från Olle Werlenius till Jan-Erik Johansson under Apheresis sidan 7
5. En ruta med Hematologimottagning tillagd på sidan 8
6. Organisationsbild sidan 9 utbytt
7. ALT och MPN samarbetar som team, ny bild slide 9 och 10
8. Elisabeth Wallhult tf Quality Manager tf Quality Manager
9. Elisabeth Wallhult borttagen som tf Quality Manager, Therese Hermansson Rutinansvarig, organisationsbild SU samt VO Specialistmedicin uppdaterat

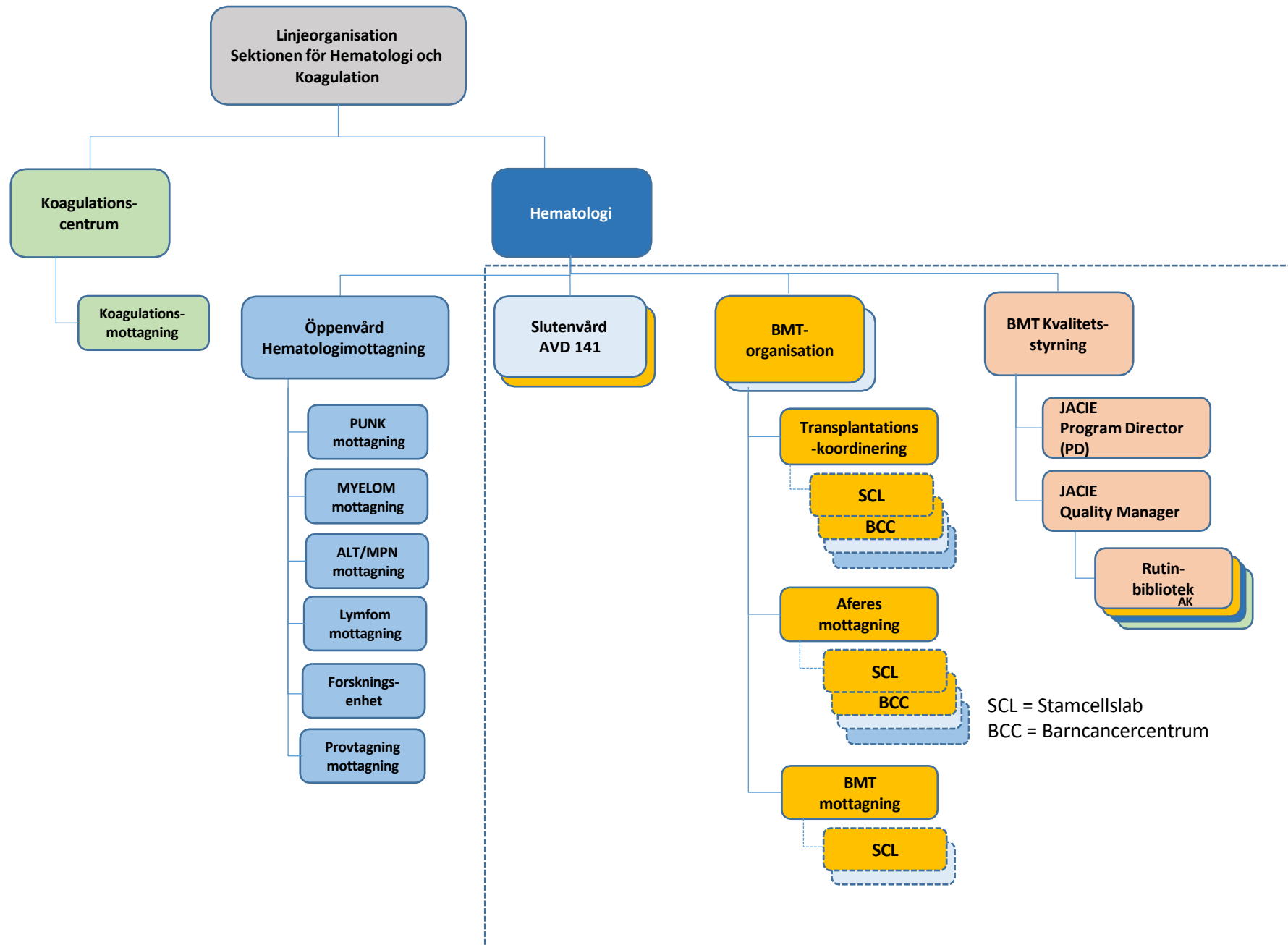


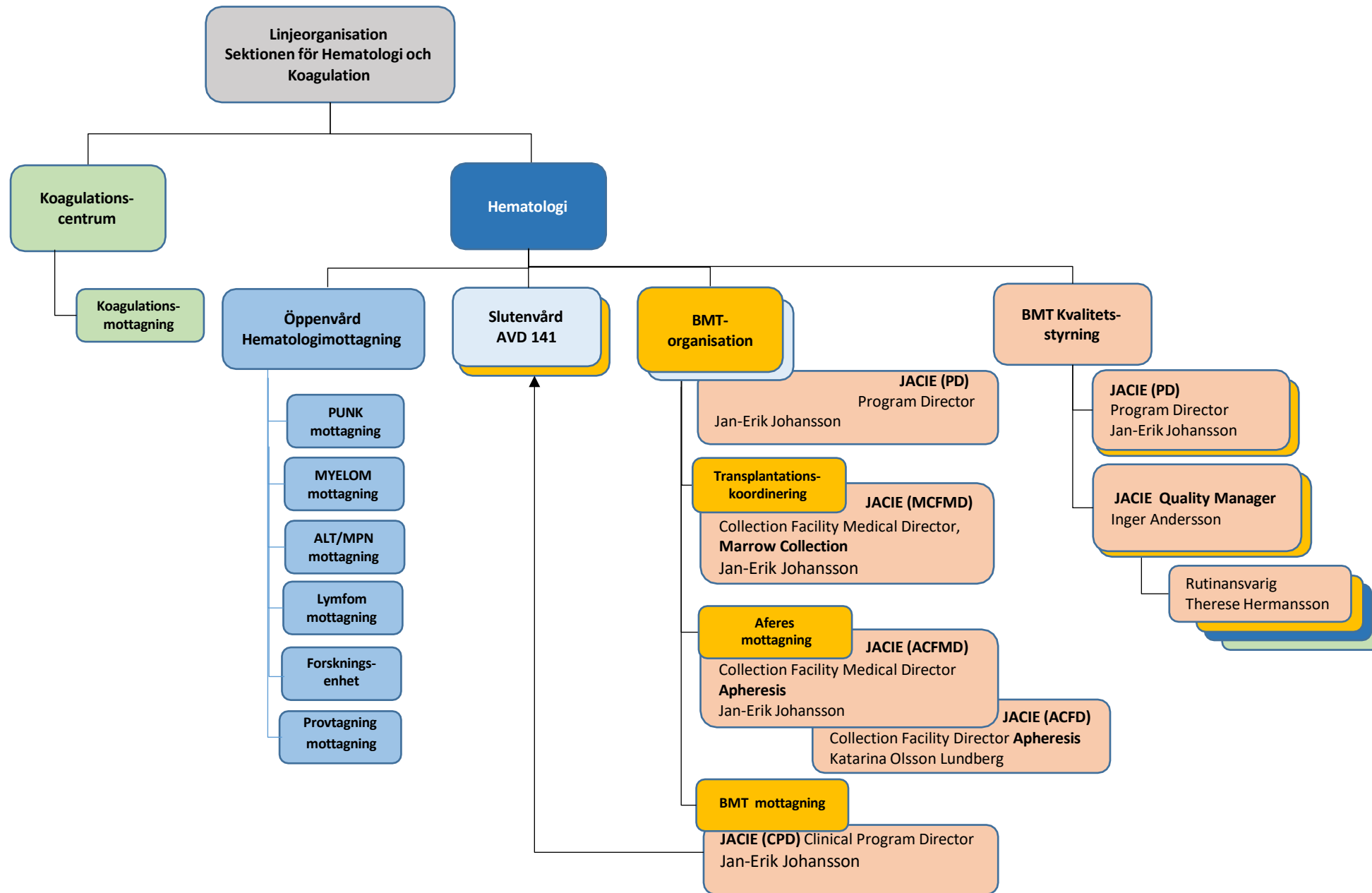




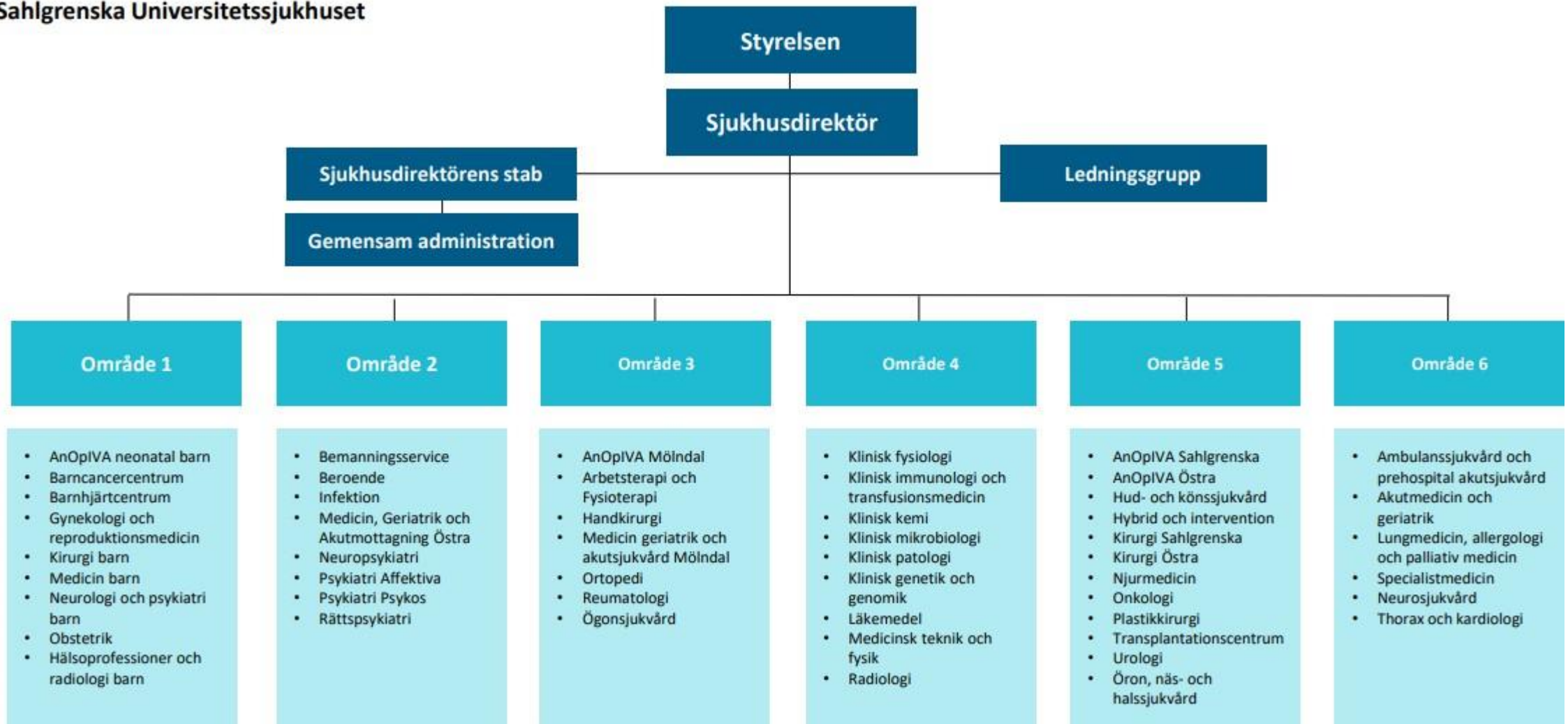
SCL = Stamcellslab  
BCC = Barncancercentrum



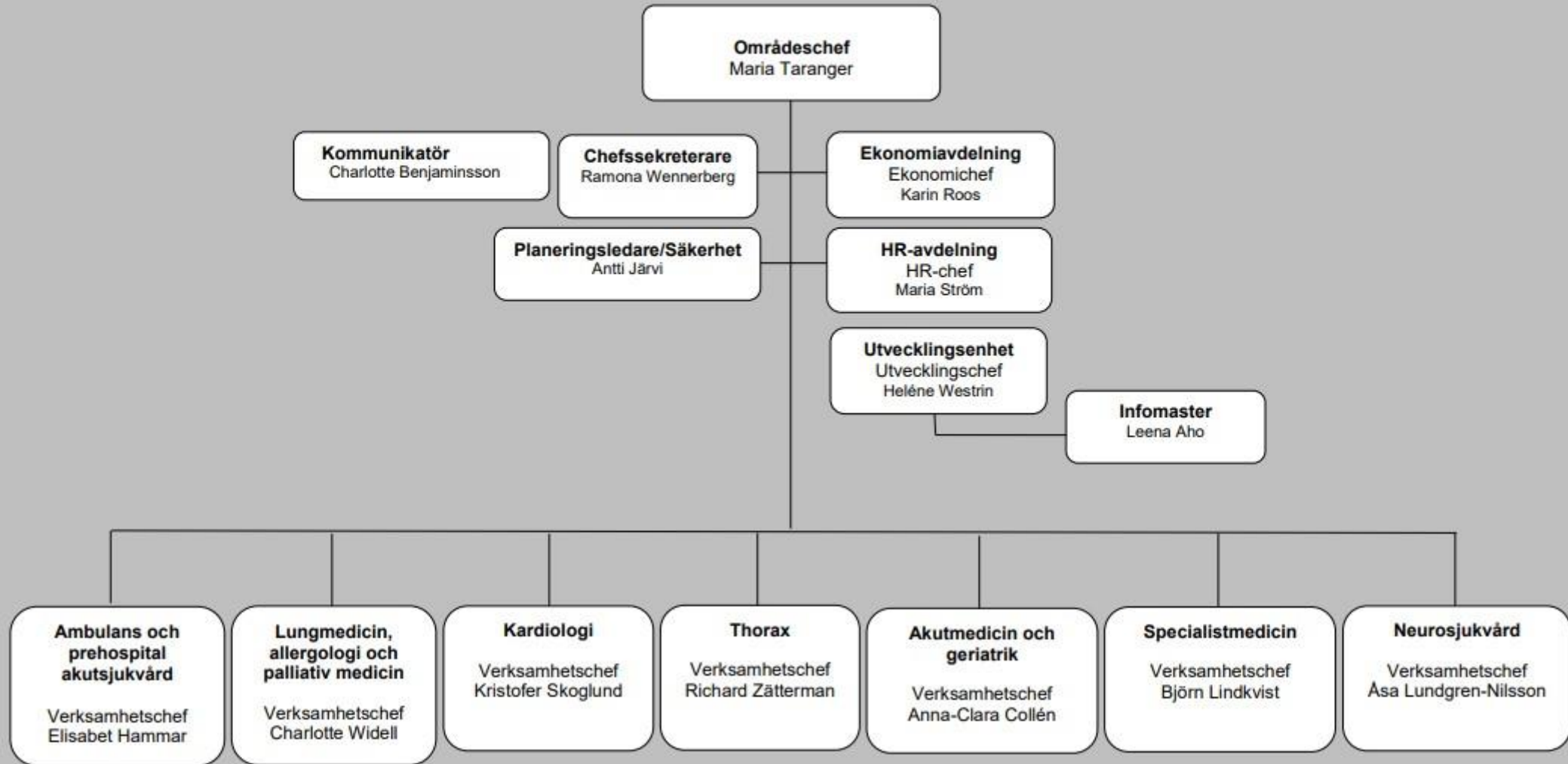




Organisationsskiss  
Sahlgrenska Universitetssjukhuset



# Organisationsplan Område 6



# Enheter inom Verksamhet Specialistmedicin

