

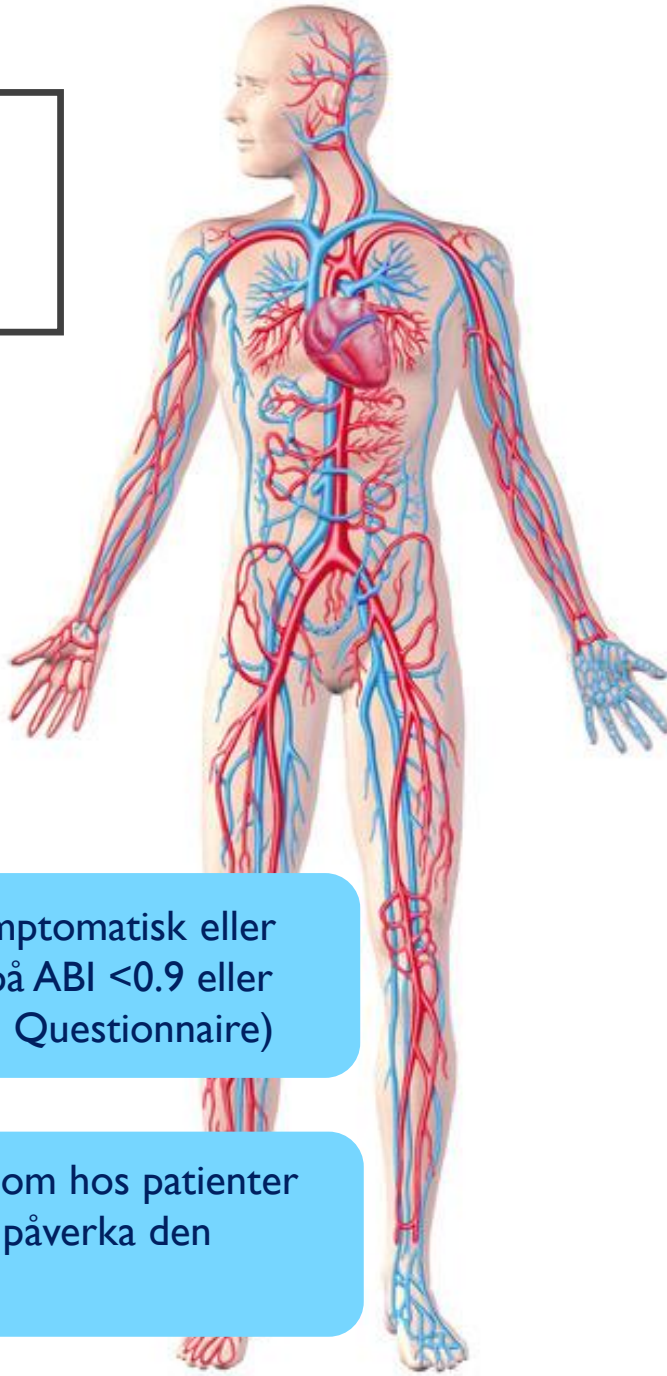


CAD-PAD-STUDIEN*:
 FÖREKOMST AV BENARTÄRSJUKDOM HOS
 PATIENTER MED KRANSKÄRLSSJUKDOM SOM
 NYLIGEN VÅRDATS FÖR AKUT KORONART
 SYNDROM

Målsättning:
 Att hos konsekutiva patienter som
 bedöms på en specialiserad
 sekundärpreventiv kardiologisk
 öppenvårdsenhet i efterförloppet av
 akut koronart syndrom:

 Undersöka hur stor andel som även har asymptomatisk eller symptomgivande benartärsjukdom (baserat på ABI <0.9 eller >1.3 samt resultat av Edinburgh Claudication Questionnaire)


 Undersöka om identifiering av benartärsjukdom hos patienter med akut koronart syndrom kan komma att påverka den sekundärpreventiva behandlingsstrategin



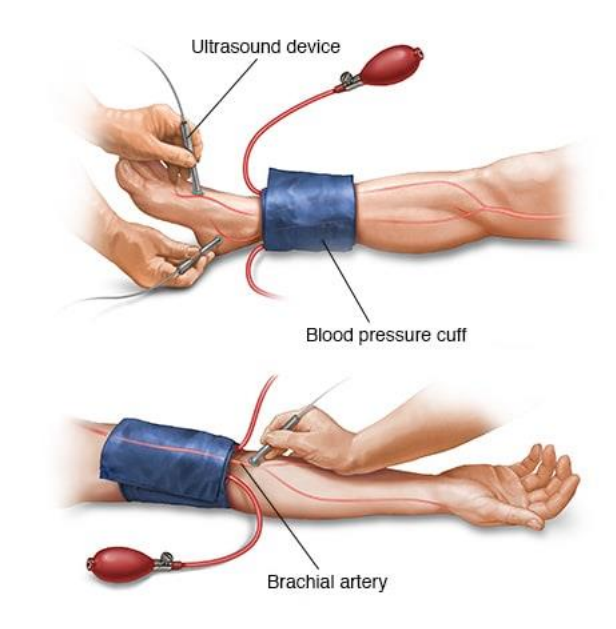
**The Edinburgh Claudication Questionnaire:
 CAD/PVD**

* A positive questionnaire diagnosis of claudication is made only if the "correct" answer is given to *all* questions

Questions	Correct Answer
1. Do you get pain or discomfort in your legs(s) when you walk? <input type="radio"/> Yes <input type="radio"/> No <input type="radio"/> Unable to walk • If you answered "yes" to question 1, please answer the following questions	Yes
2. Does the pain ever begin when you are standing or sitting still?	No
3. Do you get it when you walk uphill or in a hurry?	Yes
4. Do you get it when you walk at an ordinary pace on the level?	Yes
5. What happens if you stand still? • Usually continues for more than 10 minutes? • Usually disappears in 10 minutes or less?	No Yes
6. Where do you get this pain or discomfort? • Mark the places with an "X" on the diagram	



Studiepopulationens storlek: n=300



*CAD=coronary artery disease, PAD=peripheral artery disease