

Sjukhusstramaday VGR

28 november 2023

Stationshuset Konferens Göteborg

Kl 13 - 16



Female empowerment!

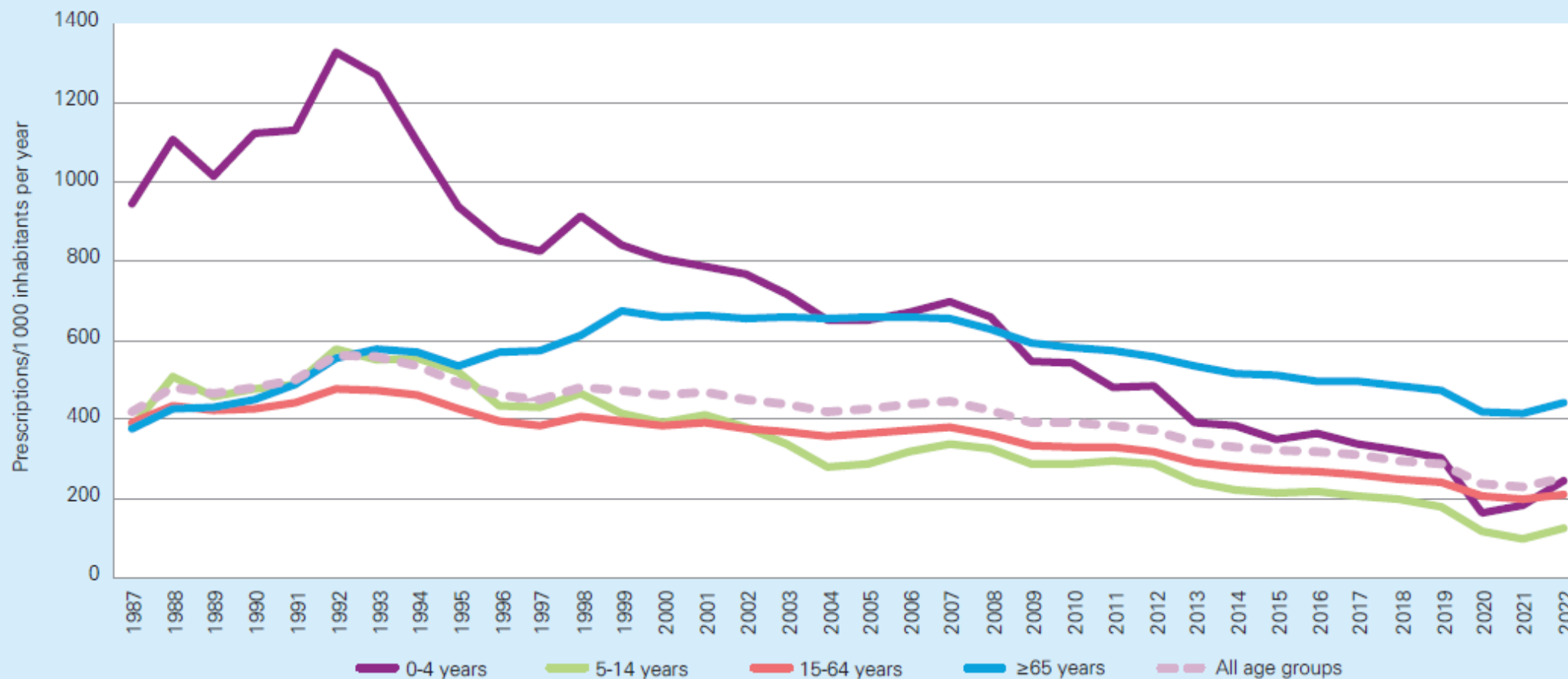


Program

- Kl 13 Inledning Gunnar Jacobsson, Strama VGR
- Kl 13.10 Vacciner till äldre Malin Bengnér, Smittskydd Jönköping
- Kl 14 Stramaappen Ulrika Snygg-Martin, Strama SU
- Kl 14.30 Fika
- Kl 15 ECDC VRI/antibiotika 2023 Sofia Myhrman, Åsa Mellgren
Vårdhygien/Strama SU
- Kl 15.50 Avslutande diskussion Gunnar Jacobsson
- Kl 16 Slut

Antibiotikarecept per ålder

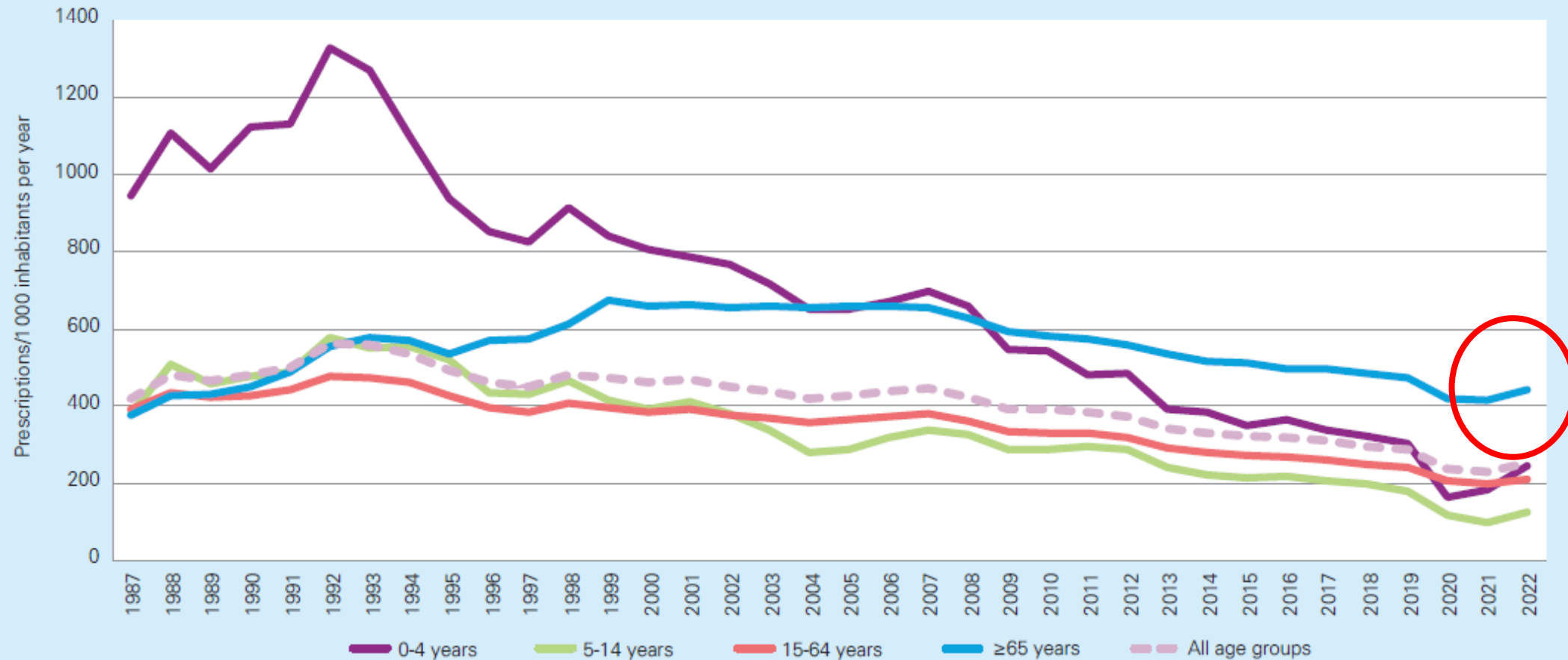
Figure 1.3. Sales of antibiotics (J01 excl. methenamine) in outpatient care by age group in 1987-2022.



Source: The Public Health Agency of Sweden

Antibiotikarecept per ålder

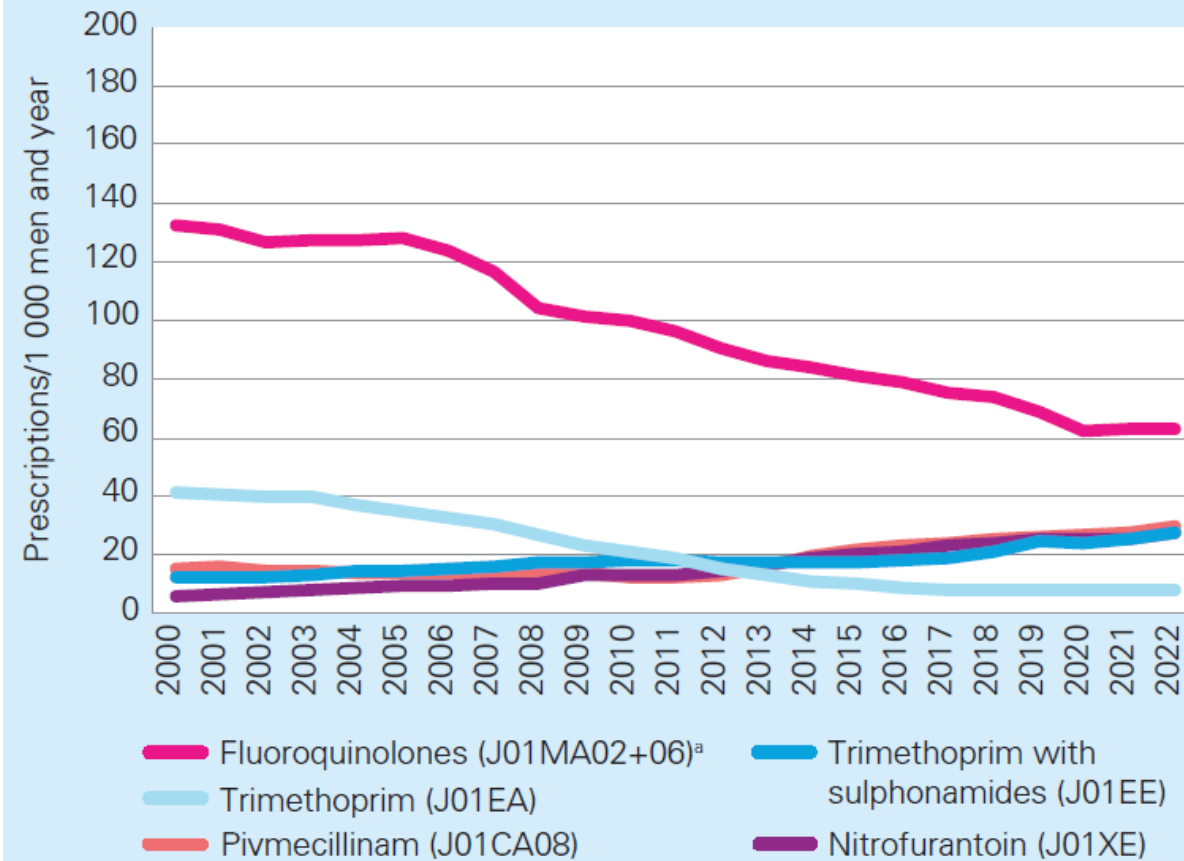
Figure 1.3. Sales of antibiotics (J01 excl. methenamine) in outpatient care by age group in 1987-2022.



Source: The Public Health Agency of Sweden

Urinvägsantibiotika äldre män

Figure 1.12. Sales of antibiotics commonly used to treat urinary tract infections in men aged 65 years or older in outpatient care between 2000 and 2022.



^aFrom 2021, only ciprofloxacin (J01MA02) is represented in the group fluoroquinolones.

Source: The Public Health Agency of Sweden

Antibiotikariktlinjer

Wathne *et al.* *Antimicrobial Resistance and Infection Control* (2019) 8:63
<https://doi.org/10.1186/s13756-019-0515-5>

Antimicrobial Resistance
and Infection Control

RESEARCH

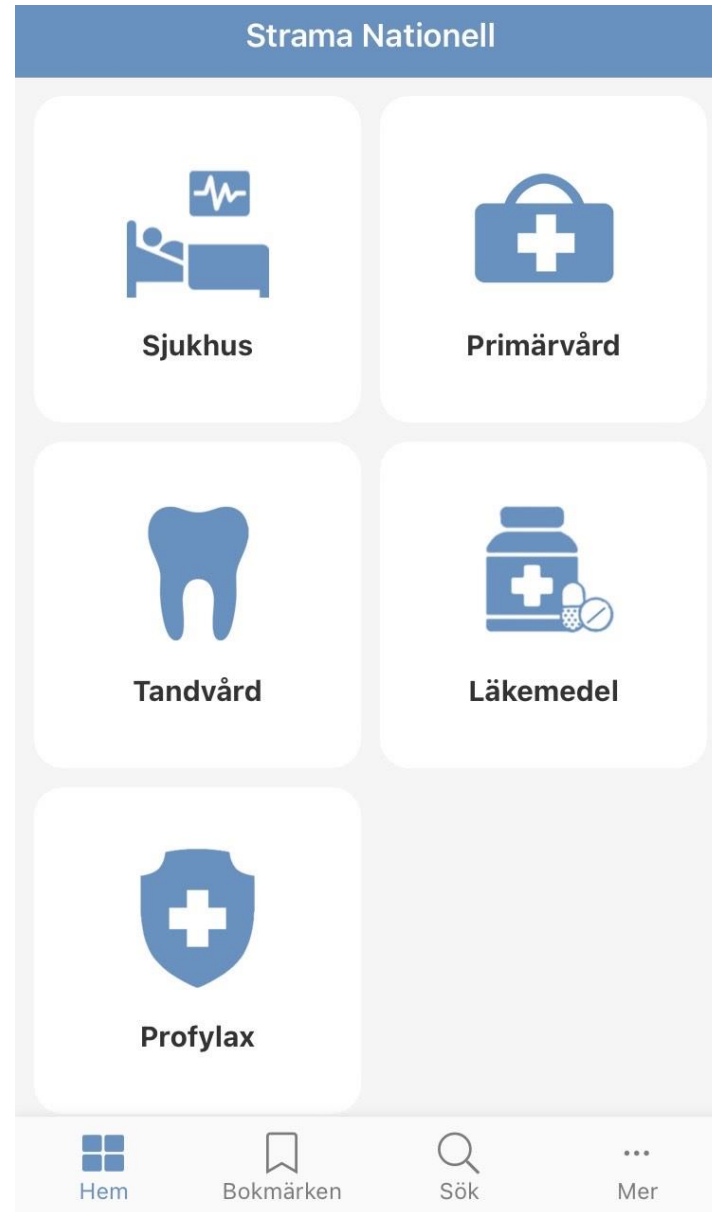
Open Access

The association between adherence to national antibiotic guidelines and mortality, readmission and length of stay in hospital inpatients: results from a Norwegian multicentre, observational cohort study

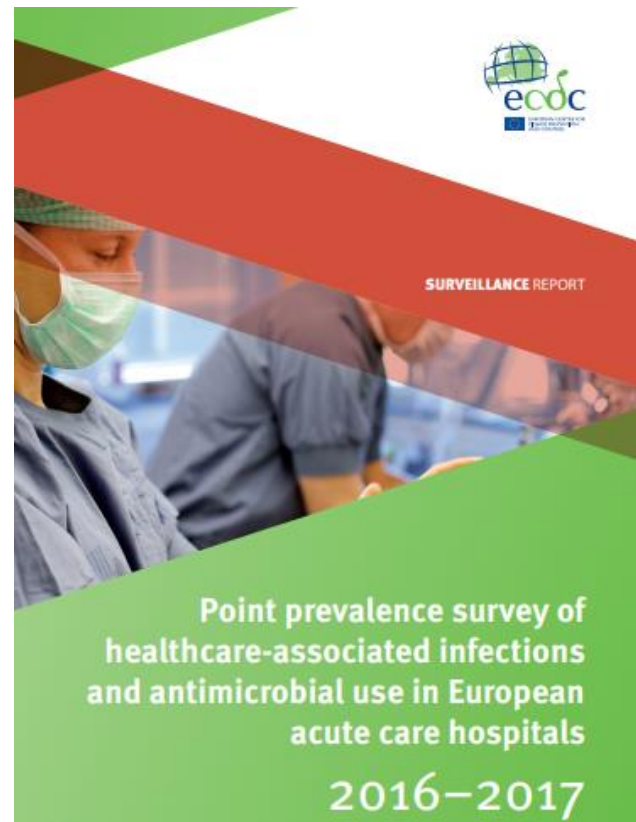


Jannicke Slettli Wathne^{1,2,3*} , Stig Harthug^{1,2}, Lars Kåre Selland Kleppe⁴, Hege Salvesen Blix⁵, Roy M. Nilsen⁶, Esmita Charani⁷ and Ingrid Smith^{8*}

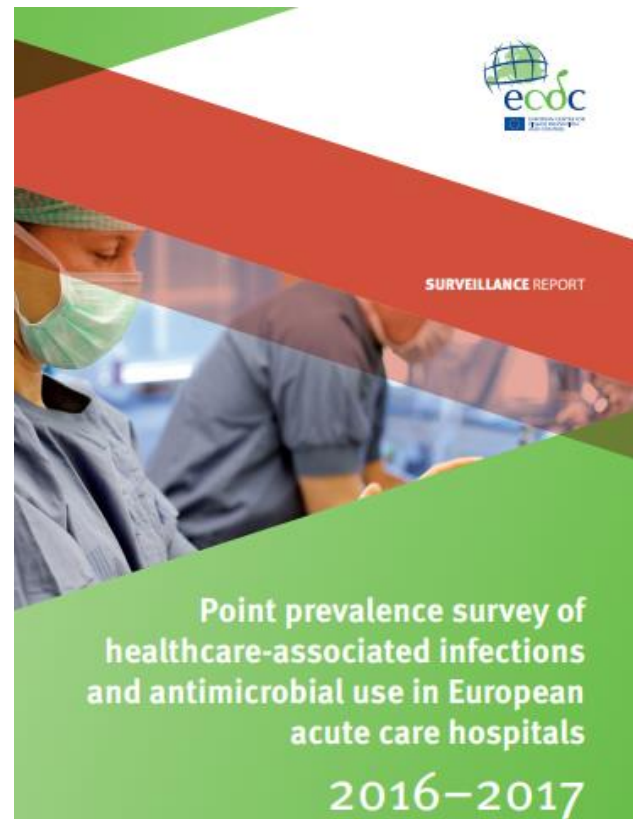
Antibiotikariktlinjer



ECDC PPM VRI/Antibiotika 2023



ECDC PPM VRI/Antibiotika 2016-2017
VRI-frekvens 5,9%
Antibiotikafrekvens 32,9%



Infektionsverktyget VRI 2022-2023

Incidens VRI, somatisk vård (% vtf med VRI av alla vtf)
måltal 2022-23 <4,5%

