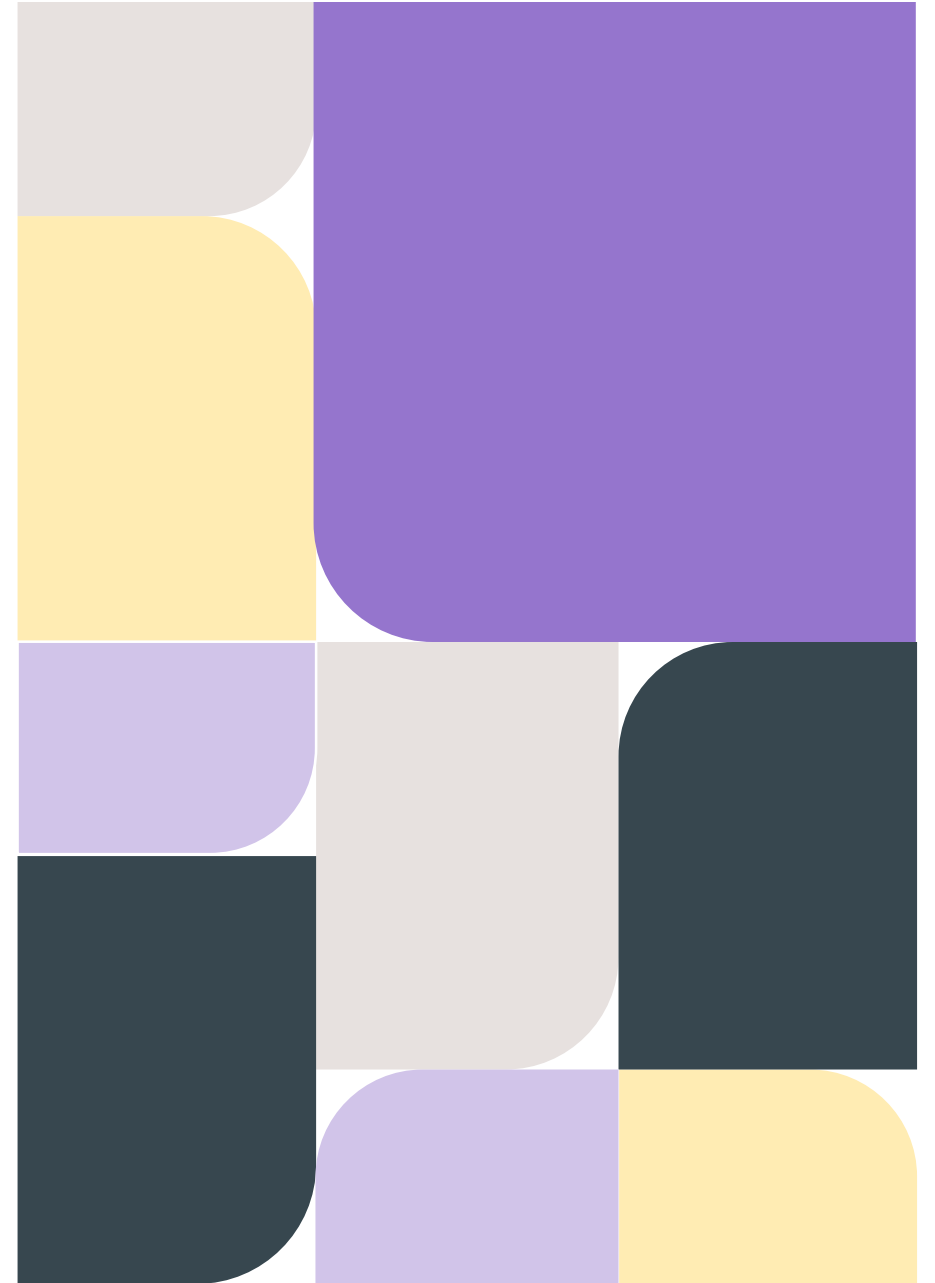


Beredning av handlingsalternativ

Underlag till referensgrupp 2025-06-17



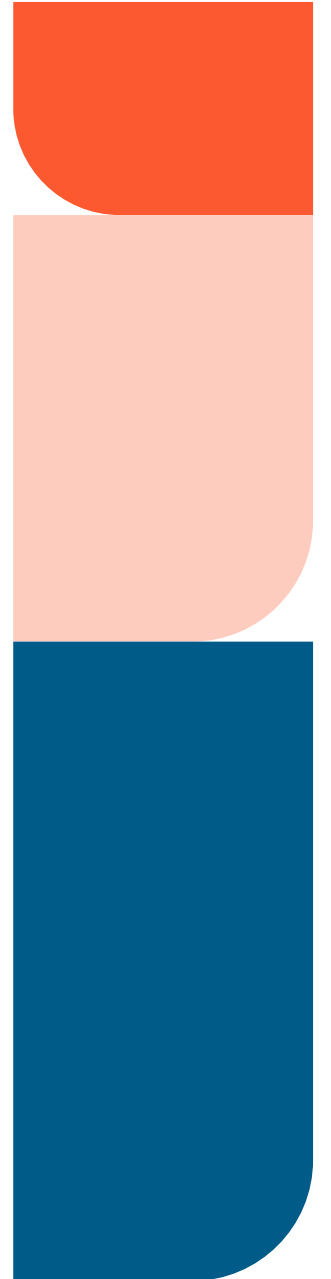
Agenda

- Sammanställning analys Oracles svar
- Återkoppling efter möte teknisk roadmap Oracle
- Justeringar av delrapporten utifrån input från RD
- Tidplan fram till beslut



Sammanställningen Oracles svar

- Tankar/synpunkter?
- Utvärdering av leverantör
 - Checklista

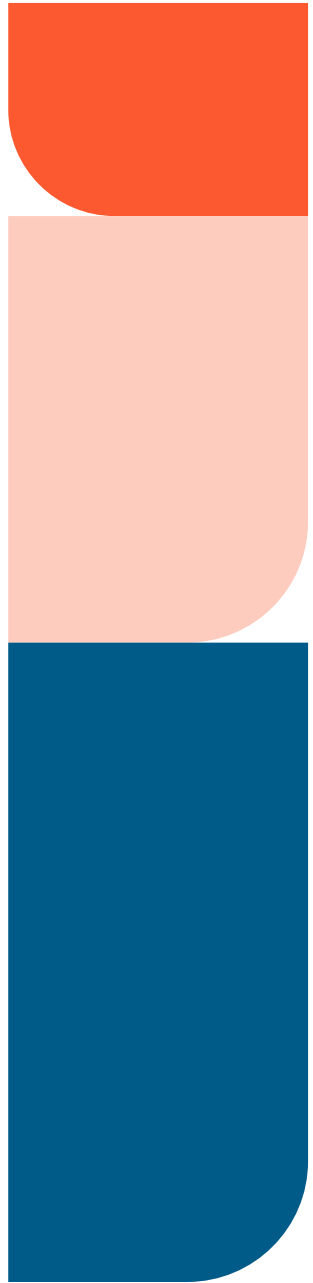


Återkoppling efter möte teknisk roadmap Oracle

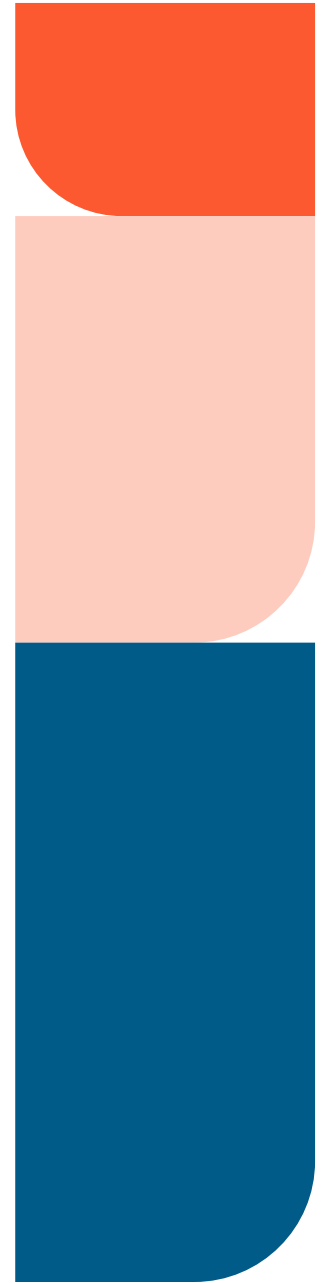
NLL seamless	NLL seamless	NLL seamless	NLL seamless	NLL seamless	NLL seamless
	Clinical AI Agent part1 (Beta)	Clinical AI Agent part1 (Beta)	Clinical AI Agent part2 (Beta?)	Clinical AI Agent part2 (Beta?)	Clinical AI Agent part2
Mpages etc.	Mpages etc.	Mpages etc.	Mpages etc.	Mpages etc.	
CAMM	CAMM	CAMM	CAMM	CAMM	CAMM
Patient Portal (P24)	Patient Portal (P24)	Patient Portal	Patient Portal	Patient Portal	Patient Portal
IAM	IAM	IAM	IAM	IAM	IAM
CareAware Suite	CareAware Suite	CareAware Suite	CareAware Suite	CareAware Suite	CareAware Suite
Appliances	Appliances	Appliances	Appliances	Appliances	Appliances
Capacity Management	Capacity Management	Capacity Management	Capacity Management	Capacity Management	Capacity Management
SAP BO	Oracle Analytics	Oracle Analytics	Oracle Analytics	Oracle Analytics	Oracle Analytics
PowerChart	PowerChart	PowerChart	PowerChart	PowerChart	PowerChart Ambulatory gen2
RevCycle	RevCycle	RevCycle gen2	RevCycle gen2	RevCycle gen2	RevCycle gen2
P2 Sentinel	P2 Sentinel	P2 Sentinel	P2 Sentinel	P2 Sentinel	P2 Sentinel
VMware VDI	VMware VDI	VMware VDI	VMware VDI	VMware VDI	VMware VDI
2025	2026	2027	2028	2029	2030

■ VGR HO, VGR IM & AM
 ■ VGR HO, VGR IM, Oracle Health AM
 ■ Oracle Health HO, IM & AM
 ■ OCI Commercial Oracle HO, Oracle Health IM & AM*

HO = Hosting
 IM = Infrastructure Mangement
 AM = Application Management
 * = AM in OCI not decided

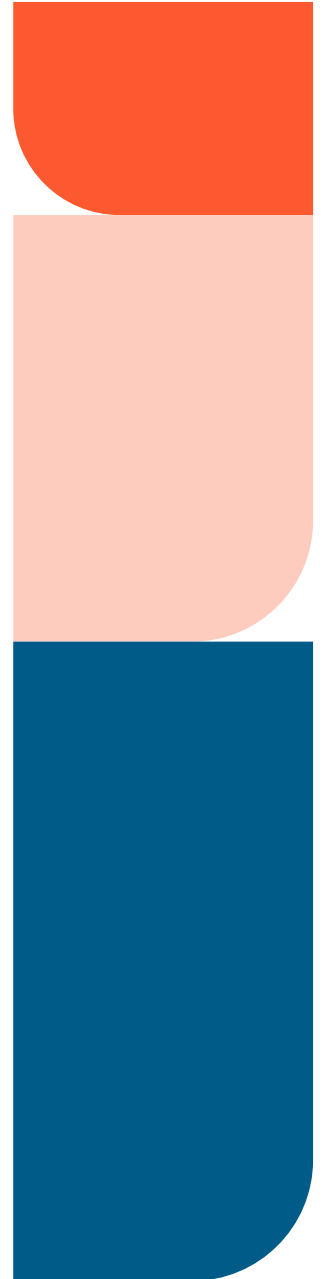


Solutions	Oracle Agent	Revenue Cycle n2	Oracle HR Abul or y ge n2	Oracle HR n2 (At er st.)	Oracle Patient Portal	Health Data Intelligence	Oracle Analytics
PD1							
724Access Downtime Viewer				E			
Behavioral Health				E			
CareAware BMDI				E			
CareAware iBus				E			
CareAware Infusion Suite				E			
CareAware Multimedia				E			
CareAware Patient Flow				E			
CareAware Reporting						E	
CareAware VitalsLink				E			
Cerner Provision Document Imaging				E			
Charge services		E					
Emergency Medicine (FirstNet)				E			
General Laboratory				E			
Health Information Management		E					
Inpatient Pharmacy				E			
Lights On Network							
Microbiology				E			
Dragon Medical One Speech Recognition	D						
Olympus							
Oncology				E			
Open Engine							
OPENLink							
P2Sentinel				E			
Point of Care Medication Administration			D	E			



Justeringar av delrapporten utifrån input från Regiondirektören

- Kompletteringar/justeringar
 - Mer information om Handlingsalternativ A
 - Utlåtande från beslutsfattarna
- Kommer att presenteras för Regionstyrelsen 23/6
- Allmän handling



Tidplan fram till beslut

- Avsätta extra tid 8/9-12/9 (vecka 37)
- Pugh-analys

